



RWESCK DIGITAL TOOLS TRAINING FOR WASH

*Empowering Faculty, Students, & Administrators
for SDG 6.1*

Richard Buamah

AGENDA

1 Introduction & WASH Challenges

- Addressing fragmented water and sanitation issues with a holistic, sustainable approach.
- Responding to climate change, pollution, and rising demand for safe water.

2 RWESCK Capacity Building & Digitalisation

- Empowering faculty, students, and administrators through research, teaching, and skill training.
- Integrating AI and digital twin concepts for real-world WASH solutions.

3 Adobe Express Training Modules

- Personal branding, digital communication, and event promotion for career readiness.
- Hands-on sessions in video storytelling, podcast creation, and marketing campaigns.

4 Advanced Digital Skills & Innovation

- Building entrepreneurial mindsets and critical thinking through digital tools.
- Responsible AI integration for innovative WASH solutions.

5 Learning Ecosystem & Future Readiness

- Flexible, self-paced training and global networking opportunities.
- Continuous skill development for adaptability and employability in the evolving WASH sector.

CHALLENGES IN WATER & SANITATION

Fragmented WASH Landscape

- Multiple challenges require a holistic approach to water and sanitation management.

Climate Change & Pollution Threats

- Marine and freshwater ecosystems face risks to biodiversity, economy, and drinking water quality.

Rising Demand from Population Growth

- Expanding populations and shifting consumption patterns intensify pressure on water resources.

Infrastructure & Skills Gap

- Limited infrastructure and shortage of high-caliber personnel hinder effective WASH solutions.



INTRODUCTION TO RWESCK & WASH

RWESCK's Mission and Vision

- Advancing knowledge in water supply technologies and sanitation management for **sustainable development**.
- Building capacity through research, teaching, mentorship, and skill training.

Alignment with SDG 6.1

- Directly supports **universal and equitable access** to safe, affordable drinking water.

Holistic Approach to WASH Challenges

- Addresses fragmented landscape with integrated solutions.
- Responds to climate change, pollution, and resource scarcity.



CAPACITY BUILDING & DIGITALISATION

Advancing Research & Innovation

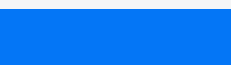
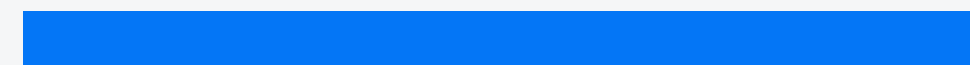
- Driving impactful research in water supply technologies and sanitation management.
- Integrating **AI** and digital twin concepts for real-world WASH solutions.

Empowering Through Teaching & Mentorship

- Tailored training for faculty, students, and administrators to build capacity.
- Creating an ecosystem for skill development and professional growth.

Fostering Entrepreneurial Thinking

- Encouraging innovation and critical thinking in WASH education.
- Equipping students with digital tools for **career readiness** and employability.



FUTURE SKILLS & DIGITAL FLUENCY

1. Digital Transformation in Education

- Emerging technologies and AI are reshaping teaching and learning environments.
- Classrooms leverage digital tools for interactive and adaptive learning.
- AI platforms tailor content for individual needs, enhancing engagement and retention.



2. Essential Future Skills

- Students require **digital fluency** and adaptability to thrive in evolving contexts.
- Critical thinking and creative problem-solving are central to innovation.

3. Collaboration & Lifelong Learning

- Teamwork and global networking foster transformative growth.
- Continuous skill development prepares students for future careers.



ADOBE EXPRESS TRAINING MODULES

Professional Branding Mastery

- Develop standout resumes and portfolios with Adobe Express
- Enhance institutional visibility through digital branding

Strategic Digital Communication

- Craft tailored messaging for diverse audiences
- Leverage social media and digital channels for project promotion

Creative Storytelling & Event Promotion

- Integrate video storytelling to boost engagement in WASH initiatives
- Design cohesive event branding assets for professional impact

Career Readiness & Entrepreneurship

- Engage in hands-on assignments simulating real-world scenarios
- Foster critical thinking and innovative mindsets for employability

ADVANCED DIGITAL SKILLS & INNOVATION

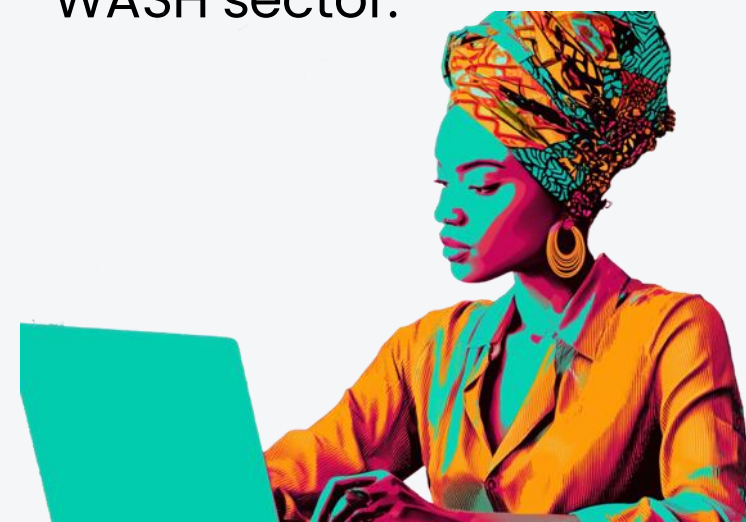


Podcast Creation for Collaboration

- Students design engaging audio content with integrated visuals for impactful storytelling.
- Hands-on projects foster creativity and connect participants internationally.

Entrepreneurship & Marketing Campaigns

- Develop cohesive promotional materials for real-world ventures using digital tools.
- Apply innovative approaches in marketing and business pitches for the WASH sector.



Responsible AI Integration

- Empower students to use AI tools for ethical business and social innovation.
- Promote analytical skills through real-world digital assignments.

Acrobat Studio Professional Training

- Master efficient PDF workflows, editing, and batch processing for productivity.
- Equip students and faculty with digital proficiency for career readiness.



LEARNING ECOSYSTEM & FUTURE READINESS

Accelerated Digital Learning

- Intuitive templates and guided creation foster rapid skill acquisition.
- Self-paced access to recorded sessions supports flexible review and mastery.

Global Collaboration & Networking

- Connect with international peers and experts for diverse perspectives.
- Exposure to varied experiences enhances knowledge sharing and teamwork.

Skill Upgrading & Career Readiness

- Portfolio and resume workshops boost visibility in the job market.
- Hands-on training in digital tools prepares students for **real-world impact**.



KEY TAKEAWAYS & NEXT STEPS

RWESCK's Academic Empowerment

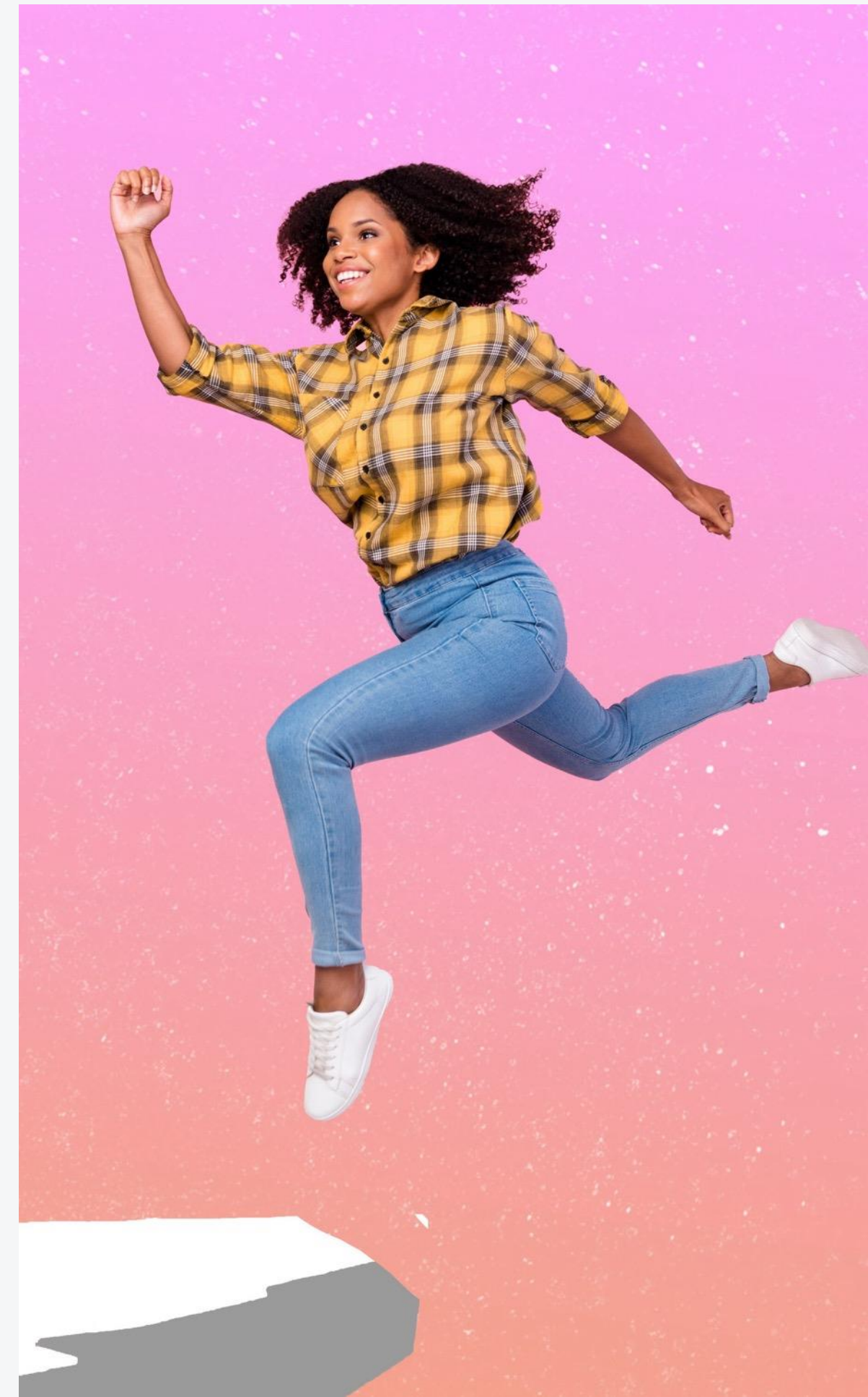
- Capacity building in water supply and sanitation aligns with **SDG 6.1**.
- Faculty, students, and administrators gain skills for sustainable WASH solutions.

Digital Tools & Future Skills

- Adobe Express and AI integration foster **digital fluency** and innovation.
- Training modules cover branding, communication, and event promotion for career readiness.

Sustainable Impact Through Collaboration

- Ongoing training and global networking drive transformative growth in WASH.
- Inclusive policies and infrastructure ensure equitable access to digital tools.





Thank you for your attention

